

# Modulo FD60 Timber Doorset

## Product Datasheet

### FD60 Configurations

#### Single Doorset

Latched, Single Action, Single Doorset (LSASD)  
Unlatched, Single Action, Single Doorset (ULSASD)

#### Fire Rating

Certifire BS EN 1634-1:2014

#### Smoke Rating

Included as standard BS EN 1634-3:2004

#### Acoustic Rating - ISO 10140-2:2010

ModuCore BB  
with Dropseal fitted Up to 30dB

#### Door Weights

ModuCore PB (44mm) 33.5 kg/m<sup>2</sup>

#### Door Leaves

ModuCore PB (To order)

Minimum Height 1500mm

Maximum Height 2040mm

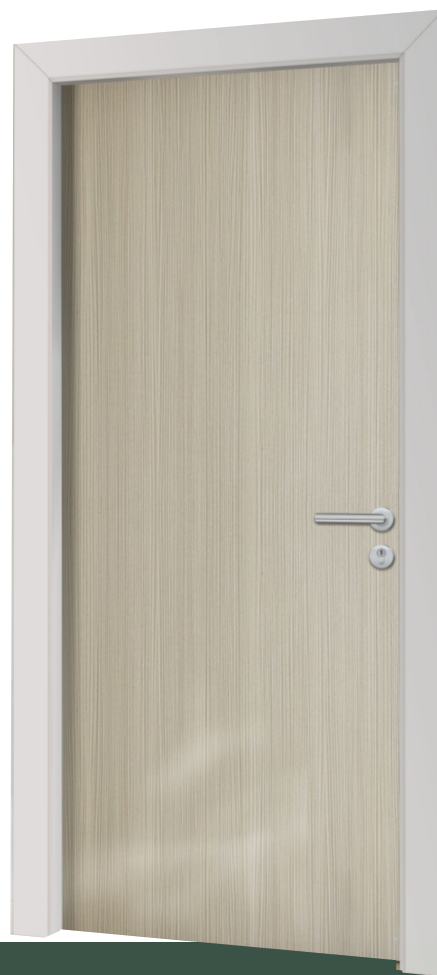
Standard Widths 726, 762, 792, 810, 826, 838, 861, 892, 914, 926mm (Smaller Widths available - Contact Selo)

#### Door Core



Construction Particle board core with hardwood lippings

Door Leaf Finishes - Please see end of Datasheet



## Modulo FD60 Timber Doorset

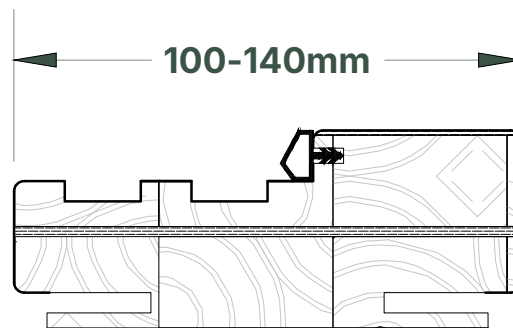
Product Datasheet

SEL-PDS-00036 | Rev.2

### Frame Options

#### ModuFrame BB

Blockboard FD60	Frame Width	Wall Width
	100mm	88mm – 115mm
	120mm	108mm – 135mm
	140mm	128mm – 155mm



Drawings not to scale

### Frame Finishes

#### Stock

RTP

☐ Ready to Paint

#### To order

CPL Laminate



Light Oak



Mid Oak



Chalk White



Slate Grey



Bespoke finishes available (Min. order qty applies)

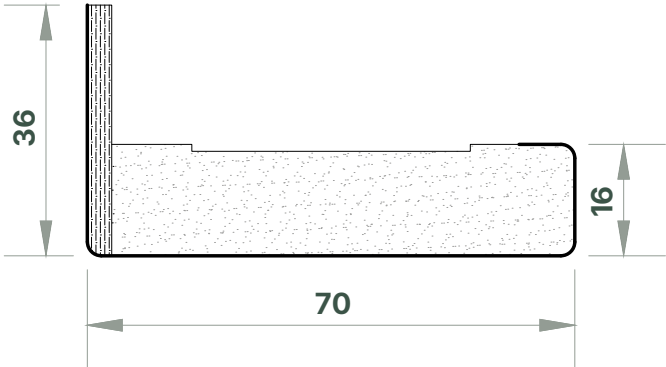
**Modulo**  
**Doorsets** BY SELO.

call 020 3880 0339  
email [sales@selo.global](mailto:sales@selo.global)  
[www.modulodoorsets.com](http://www.modulodoorsets.com)

Product specification and designs may alter without prior notice.  
Please ensure you have the most up-to-date information before placing an order. This document and all the information contained within is the physical and intellectual property of Linear Building Innovations Limited. t/a Selo.

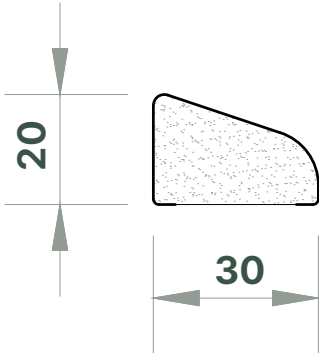
Architrave

Medium-density Fibreboard



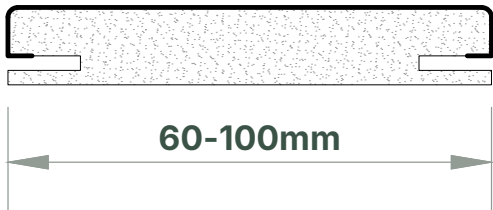
Quadrant

Medium-density Fibreboard



Extension Linings

Medium-density Fibreboard



Drawings not to scale

Architrave, Quadrant & Extension Lining Finishes

Stock	RTP	<input type="radio"/> Ready to Paint
To order	CPL Laminate	<input type="radio"/> Light Oak <input type="radio"/> Mid Oak <input type="radio"/> Chalk White <input type="radio"/> Slate Grey <input type="radio"/> Bespoke finishes available (Min. order qty applies)

**Modulo FD60 Timber Doorset**

Product Datasheet

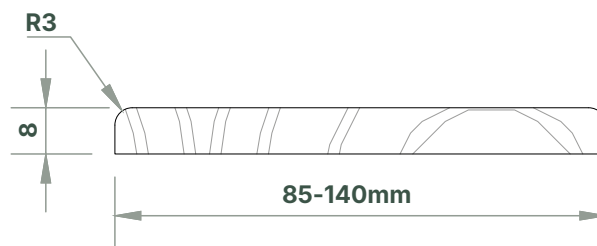
Ironmongery	Description	Part No.
Hinges	102 × 76mm G13 SSS BB Butt Hinge Radius /Square Combi	SEL-PRT-01768
Closers	Surface mounted Door Closer EN2-4 BC Surface mounted Door Closer EN2-5 BC&DA Surface mounted Door Closer EN2-5 Without BC & DA Surface mounted Electro Mag Door Closer EN4	SEL-PRT-02575 SEL-PRT-02576 SEL-PRT-02577 SEL-PRT-02568
Latches/Locks	DIN Standard Mortice Latch DIN Standard Mortice Sashlock DIN Standard Mortice Deadlock DIN Standard Mortice Bathroom Lock 76mm Tubular Latch FB1/FB2 Mortice Fire Brigade Lock (without Key) FB1/FB2 Key	SEL-PRT-02244 SEL-PRT-02248 SEL-PRT-02246 SEL-PRT-02245 SEL-PRT-02133 SEL-PRT-02255 - SEL-PRT-02257 SEL-PRT-02254 - SEL-PRT-02256
Lever handles	19mm RTD SSS Levers on Round Rose 19mm Straight SSS Levers on Round Rose 19mm Arched SSS Levers on Round Rose 19mm Arched T-Bar SSS Levers on Round Rose 19mm Straight Mitred SSS Levers on Round Rose	SEL-PRT-02542 SEL-PRT-02543 SEL-PRT-02540 SEL-PRT-02605 SEL-PRT-02606
Pull handles	425 × 19mm SSS B/F 'D' Pull Handle Customers own (subject to approval)	SEL-PRT-02034 N/A
Pushplate	500 × 90mm SSS Finger Plate Sq Corners	SEL-PRT-02044
Kickplate	150mm high x 1.2mm SSS Kickplate Sq Corners (to suit door width) 200mm high x 1.2mm SSS Kickplate Sq Corners (to suit door width)	SEL-PRT-02022 - XXXX SEL-PRT-02023 - XXXX
Cylinders	80mm SC Euro Double Cylinder KD 80mm SC Euro Cylinder & Thumbturn KD	SEL-PRT-04268 SEL-PRT-02141
Escutcheons/Pulls	52 × 8mm SSS Euro Profile Escutcheon 52 × 8mm SSS Blank Escutcheon 52 × 8mm SSS Lever Key Escutcheon Keyhole Cylinder Pull SSS Euro Cylinder Pull SSS	SEL-PRT-02048 SEL-PRT-02050 SEL-PRT-02052 SEL-PRT-02291 SEL-PRT-02253
Bathroom indicator	52 × 8mm SSS Disabled Turn & Release with Indicator	SEL-PRT-02051
Flushbolt	200 × 20mm SSS Lever Action Flush Bolt	SEL-PRT-01995
Door viewer	19mm dia SSS 180 Degree Door Viewer	SEL-PRT-01994
Letterplate	306mm x 70mm Letterplate	SEL-PRT-02021
Signage	76mm Dia' SSS AFDKS Sign 76mm Dia' SSS Fire Door Keep Locked FDKL Sign 76mm Dia' SSS Fire Door Keep Shut FDKS Sign 76mm Dia' Disabled Symbol SSS 76mm Dia' Female Symbol SSS 76mm Dia' Male Symbol SSS 76mm Dia' Unisex Symbol SSS 76mm Dia' WC Symbol SSS 76mm Numeral SSS Self-Adhesive. 0-9 and A, B & C	SEL-PRT-02565 SEL-PRT-02117 SEL-PRT-02118 SEL-PRT-02566 SEL-PRT-02569 SEL-PRT-02572 SEL-PRT-02579 SEL-PRT-02580 SEL-PRT-02119 - SEL-PRT-02131
Door stop	Pedestal Floor Doorstop SSS	SEL-PRT-02556
Dropseal	Concealed Dropseal (to suit door width)	SEL-PRT-02227 - SEL-PRT-02233

As standard, ironmongery is 'Satin Stainless Steel' style.

## Vision Panels

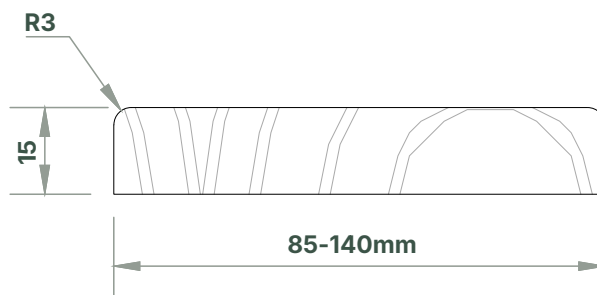
### 8mm thick

Hardwood, flat strip with width to suit frame



### 15mm thick

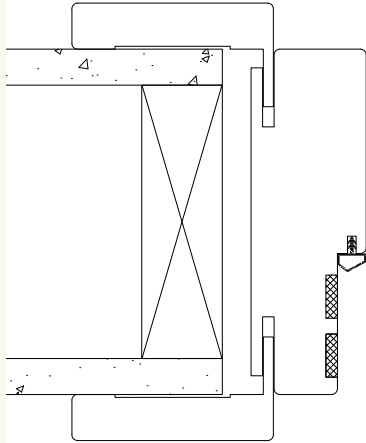
Hardwood, flat strip with width to suit frame



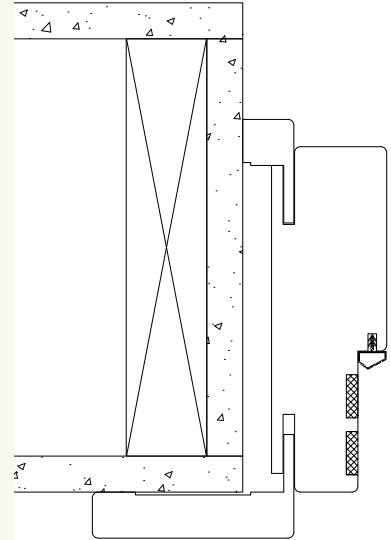
Drawings not to scale

## Permitted Frame Installations

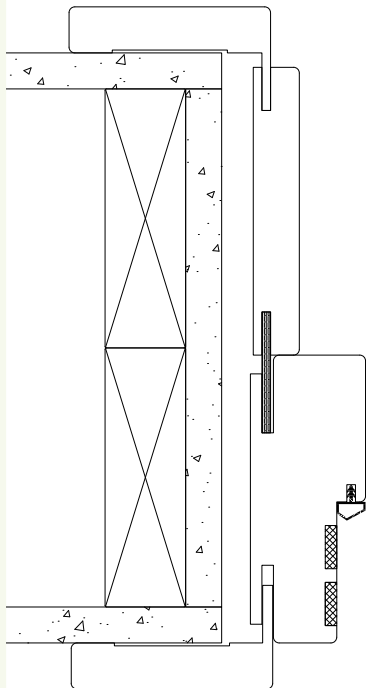
Instances where the door frame and the wall thickness are similar (-12mm to +15mm) such that the architraves are fitted flat to both faces. Note that the minimum door frame section size (width and depth) must be 100mm



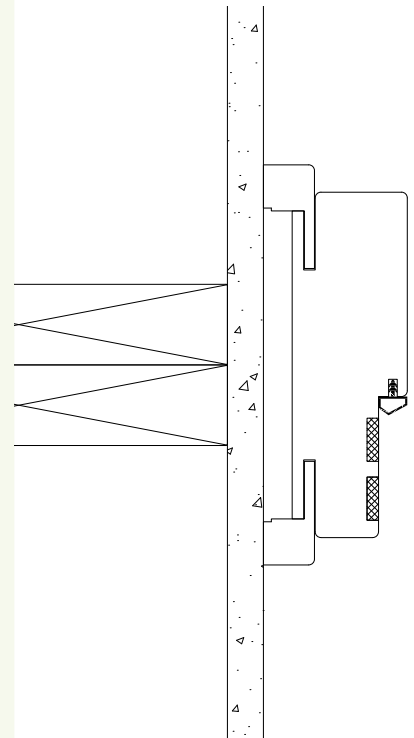
Instances where the wall thickness is greater than the frame and an extension lining is not preferred. The frame is flush to one face of the wall such that the pull side architraves are fitted flat to the wall face and the push side architraves are trimmed to abut the wall reveal face.



Instances where the wall thickness is greater than the frame (between 70mm and 110mm) and an extension lining is used. The frame is flush to one face of the wall such that the architraves are fitted flat to both faces.



Instances where the wall is of greater depth than the frame (typically a corridor) where such that the architraves are trimmed to abut the wall reveal face.



Drawings not to scale

**Note:** Architrave must always be fitted in accordance with the Field of Application. Fire stopping must always be fully covered by the architrave. Quadrant detail is available on request as alternative to trimmed abutted architrave.

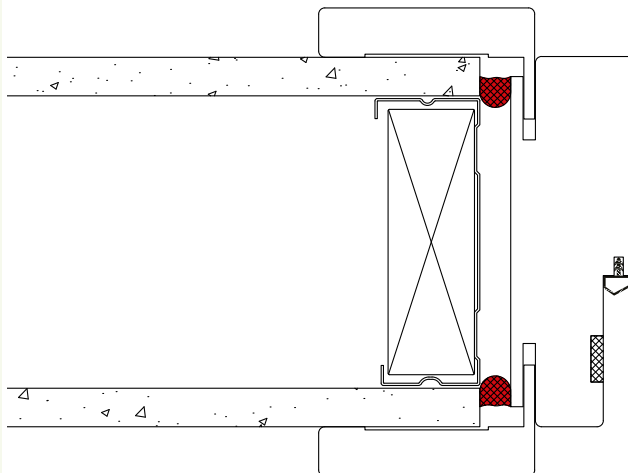
## Fire Stopping

### 1-10mm gaps

#### Best practice

Gap must be sealed on both sides with a 10mm penetration to the full width of the gap with acrylic intumescent sealant, fire tested for this application to BS 476: Part 22:1987 or BS EN 1634-1.

Timber architraves may be fitted to one or both faces.

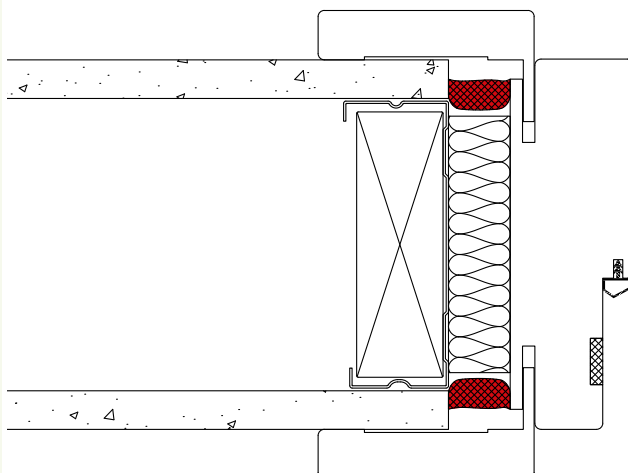


### 10-20mm gaps

Gap must be tightly packed with mineral fibre capped on both sides with a 10mm depth of acrylic intumescent mastic, (Fire tested for this application to BS 476: Part 22: 1987 or BS EN 1634-1).

Alternatively, as tested Nullifire FF197 fire rated PU Foam can be used (Must be full depth of the frame).

Timber architraves may be fitted to one or both faces.

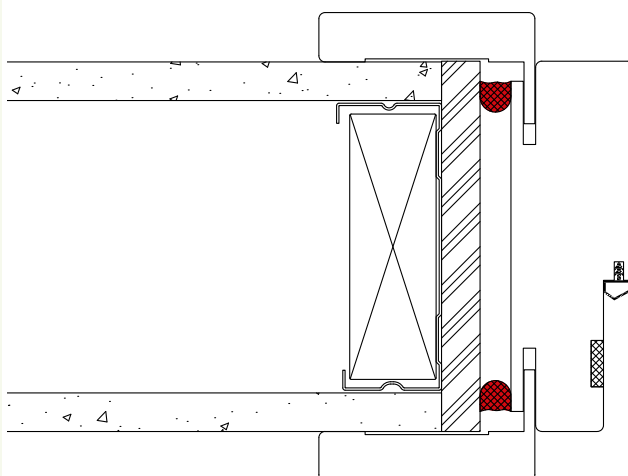


### Maximum 25mm

#### Ensure security is maintained if gaps are this size

A non-combustible subframe/liner (up to 40mm thick) should be fixed to the surrounding structure to reduce the gap to below 10mm and then follow the 1-10mm fire stopping procedure.

Timber architraves may be fitted to one or both faces.






Drawings not to scale

## Modulo FD60 Timber Doorset

Product Datasheet

SEL-PDS-00036 | Rev.2

Door Leaf Finishes	Moducore PB (To order)
Ready to Paint	<input type="radio"/> Ready to Paint
White Laminate Melamine faced MDF	 Bespoke finishes available (Min. order qty applies)
Wood Grain Laminate or Melamine faced MDF	 Bespoke finishes available (Min. order qty applies)
Solid Colour Laminate Melamine faced MDF	 Bespoke finishes available (Min. order qty applies)